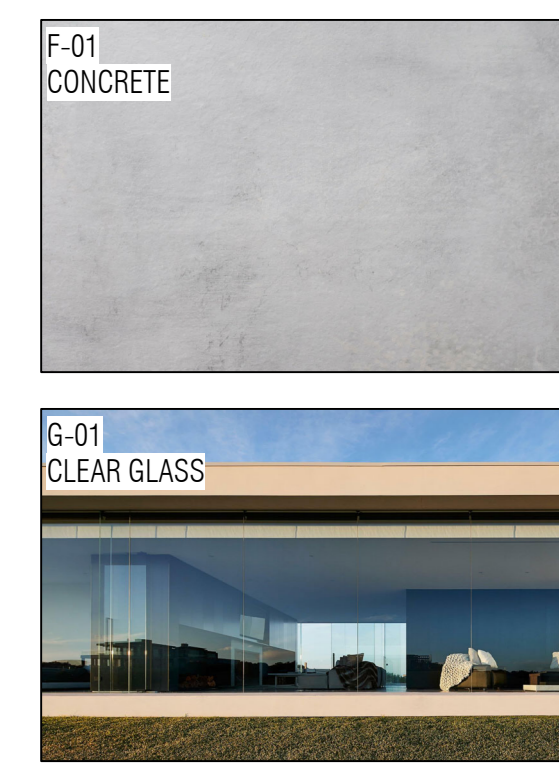


TOWN PLANNING

# 325 PINNACLE LANE, STEEL CREEK

TOWN PLANNING SHEET LIST	
Sheet Number	Sheet Name
TP 01	CONTENTS/CONTEXT/AREAS/MATERIALS SCHEDULE
TP 02	EXISTING SITE PLAN
TP 03	DEMOLITION PLAN
TP 10	PROPOSED SITE PLAN
TP 11	PROPOSED BASEMENT PLAN
TP 12	PROPOSED GROUND FLOOR PLAN
TP 13	PROPOSED FIRST FLOOR PLAN
TP 14	PROPOSED ROOF PLAN
TP 20	PROPOSED ELEVATIONS
TP 30	PROPOSED SECTIONS
TP 40	30 VIEWS

**MATERIALS KEY**



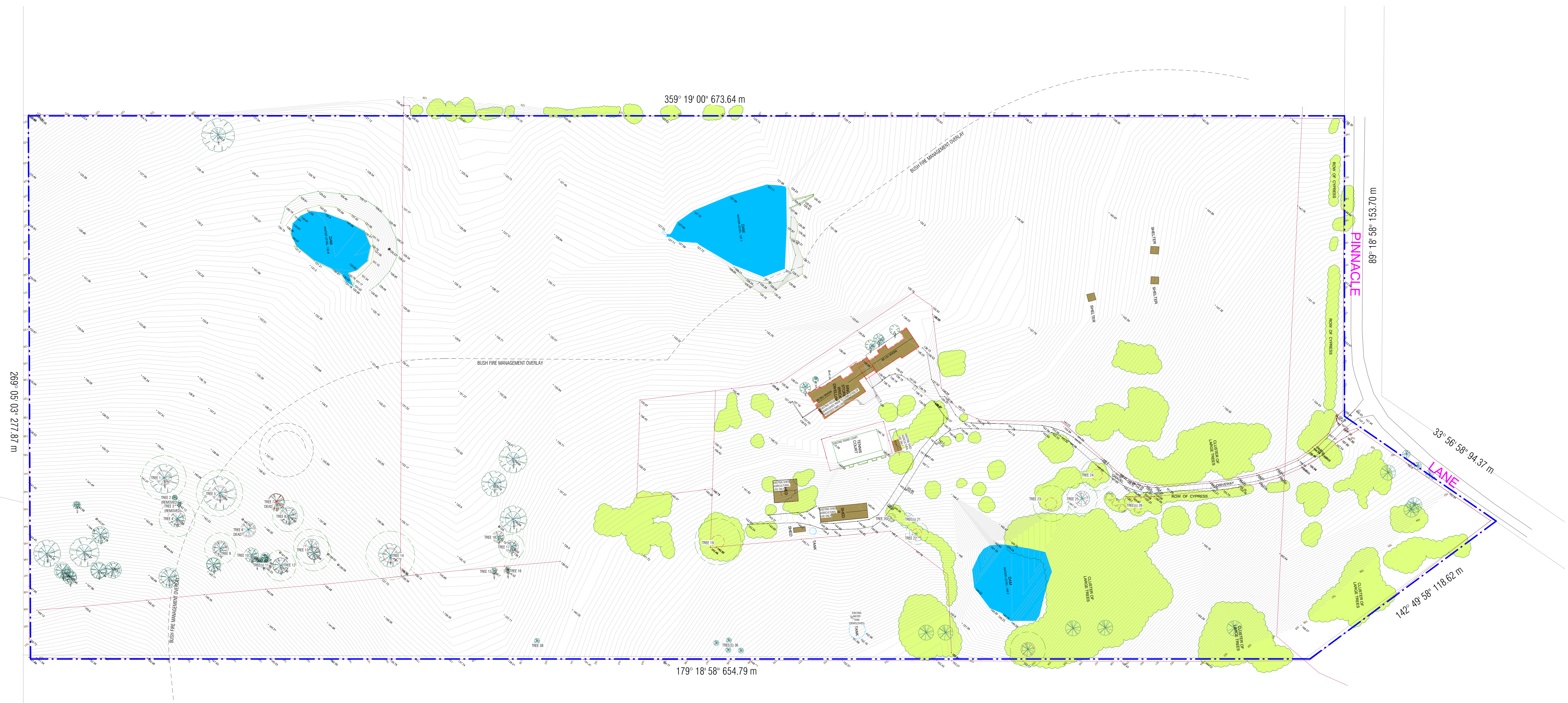
MATERIALS SCHEDULE	
Material: Mark	Material: Comments
F-01	CONCRETE - CAST INSITU
G-01	CLEAR GLASS

AREA SCHEDULE	
Name	Area
LAUNDRY	11 m <sup>2</sup>
PANTRY	26 m <sup>2</sup>
KITCHEN	31 m <sup>2</sup>
DINING	46 m <sup>2</sup>
LIVING	79 m <sup>2</sup>
COOL ROOM	6 m <sup>2</sup>
BEDROOM 1	31 m <sup>2</sup>
BEDROOM 2	30 m <sup>2</sup>
BEDROOM 3	30 m <sup>2</sup>
BEDROOM 4	30 m <sup>2</sup>
LOUNGE	47 m <sup>2</sup>
ENSUITE 4	6 m <sup>2</sup>
ENSUITE 3	6 m <sup>2</sup>
ENSUITE 2	6 m <sup>2</sup>
ENSUITE 1	7 m <sup>2</sup>
HALL	43 m <sup>2</sup>
FOYER	62 m <sup>2</sup>
SHED	221 m <sup>2</sup>
MUD ROOM	29 m <sup>2</sup>
AIR LOCK	11 m <sup>2</sup>
LOWER FOYER	29 m <sup>2</sup>
SERVICES	43 m <sup>2</sup>
GARAGE	276 m <sup>2</sup>
CELLAR	29 m <sup>2</sup>
LOWER FOYER	46 m <sup>2</sup>
DRY ROOM	5 m <sup>2</sup>
STORE	13 m <sup>2</sup>
HALL	39 m <sup>2</sup>
POWDER	7 m <sup>2</sup>
CHANGE	13 m <sup>2</sup>
POOL ROOM	96 m <sup>2</sup>
SAUNA/CHANGE	30 m <sup>2</sup>
POWDER	5 m <sup>2</sup>
POOL STORE	48 m <sup>2</sup>
AIR LOCK	16 m <sup>2</sup>
KIDS	27 m <sup>2</sup>
MASTER BEDROOM	30 m <sup>2</sup>
MASTER ROBE	21 m <sup>2</sup>
MASTER ENSUITE	26 m <sup>2</sup>
LOUNGE	74 m <sup>2</sup>
SILVANA	27 m <sup>2</sup>
FAUSTO	27 m <sup>2</sup>
LVL 01 LANDING	28 m <sup>2</sup>
GYM	22 m <sup>2</sup>
BAR/ALFRESCO	41 m <sup>2</sup>
ROOF TERRACE	107 m <sup>2</sup>
Grand total:	46 1878 m <sup>2</sup>



○ SITE CONTEXT  
1 : 3000

REV.	DATE	DESCRIPTION



TP - SURVEY PLAN (PREPARED BY LAND DIMENSIONS)

REV.	DATE	DESCRIPTION

PROJECT :  
**325 Pinnacle Lane, Steels  
 Creek, VIC 3775**

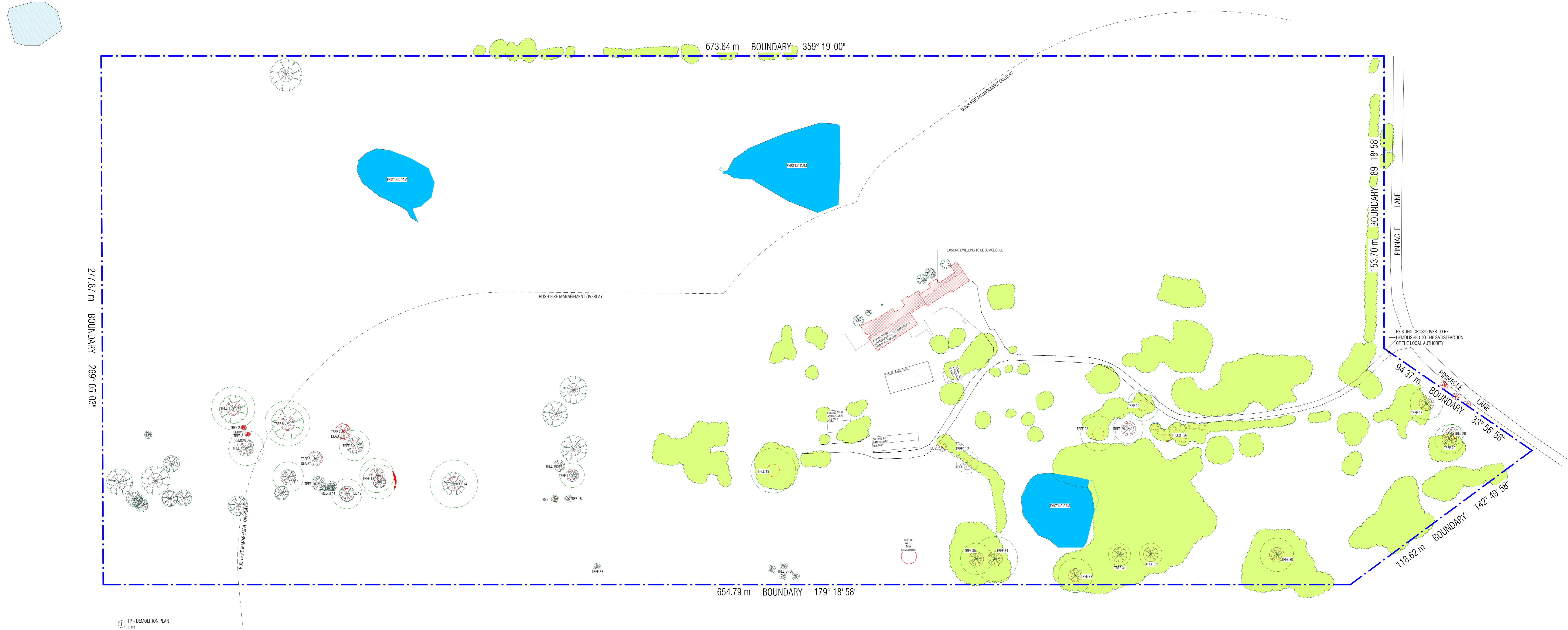
ISSUE :  
**TOWN PLANNING**

DRAWING TITLE :  
**EXISTING SITE PLAN**

JOB NO. :  
**20549**

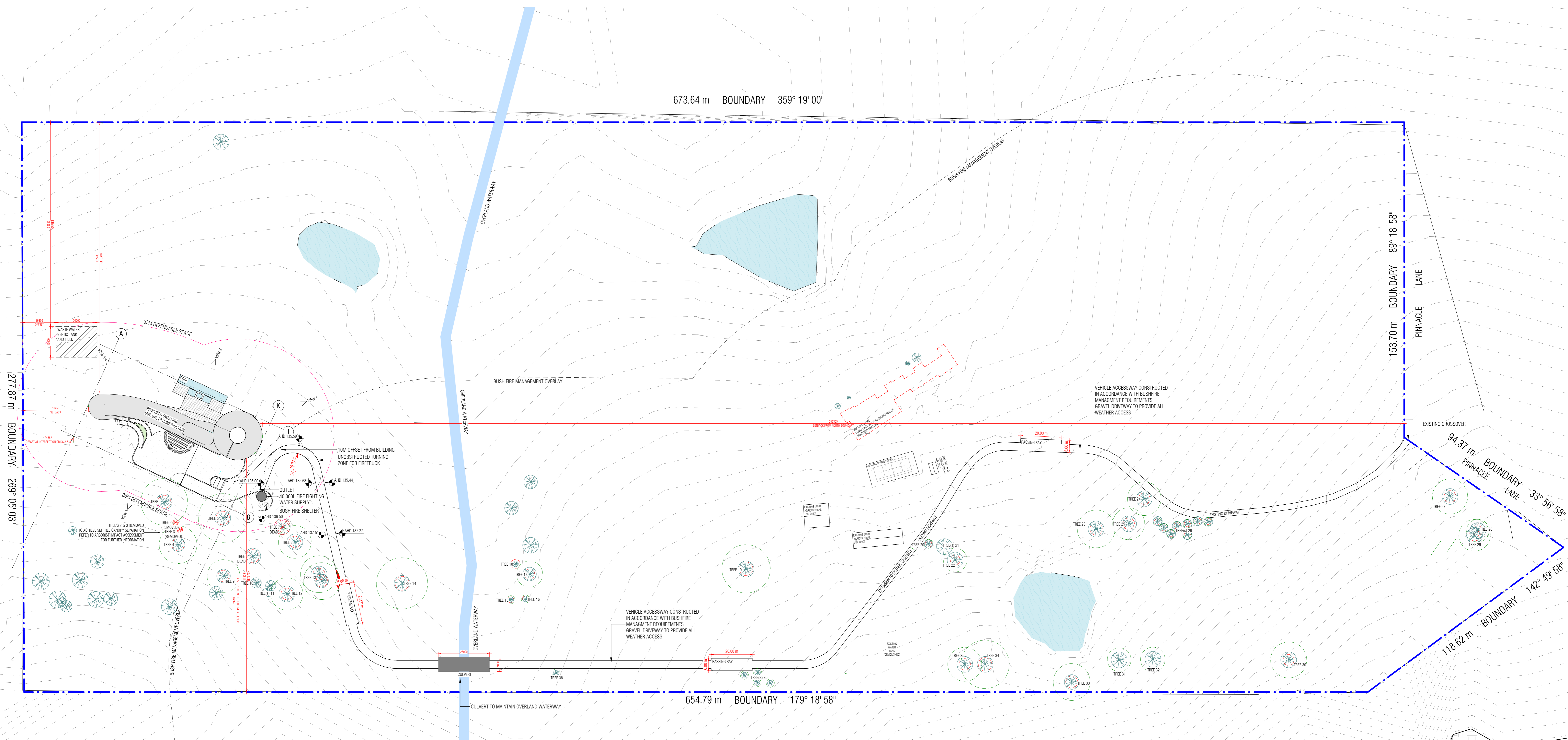
SCALE :  
**1 : 750 @ A0**

DATE :  
**15/12/2021 12:54:22 PM**



Mark	SPECIES	Comments	TPZ	SRZ	TPZ ENCROACHMENT
TREE 1	EUCALYPT	RETAIN	11.4M	3.2M	NIL
TREE 2	EUCALYPT	RETAIN	2.3M	1.6M	NIL
TREE 3	EUCALYPT	RETAIN	2.0M	1.6M	NIL
TREE 4	EUCALYPT	RETAIN	9.2M	3.0M	NIL
TREE 5	EUCALYPT	RETAIN ENCROACH	11.9M	3.3M	10%
TREE 6	EUCALYPT	DEAD	10.7M	3.2M	NIL
TREE 7	EUCALYPT	DEAD	10.4M	3.1M	DEAD TO BE REMOVED
TREE 8	YELLOW BOX	RETAIN	8.0M	2.8M	NIL
TREE 9	YELLOW BOX	RETAIN	8.0M	2.8M	NIL
TREE 10	RED STRINGYBARK	RETAIN	8.0M	2.8M	NIL
TREE 11	RED STRINGYBARK	RETAIN	3.6M	2.0M	NIL
TREE 12	RED STRINGYBARK	RETAIN	7.9M	2.8M	NIL
TREE 13	RED STRINGYBARK	RETAIN ENCROACH	9.0M	2.9M	2.4%
TREE 14	EUCALYPT	RETAIN	12.5M	4.4M	NIL
TREE 15	MESSMATE	RETAIN	2.0M	1.5M	NIL
TREE 16	RED STRINGYBARK	RETAIN	2.0M	1.5M	NIL
TREE 17	RED STRINGYBARK	RETAIN ENCROACH	6.4M	2.5M	NIL
TREE 18	EUCALYPT	DEAD	4.7M	2.2M	NIL
TREE 19	YELLOW BOX	RETAIN	11.8M	3.3M	NIL

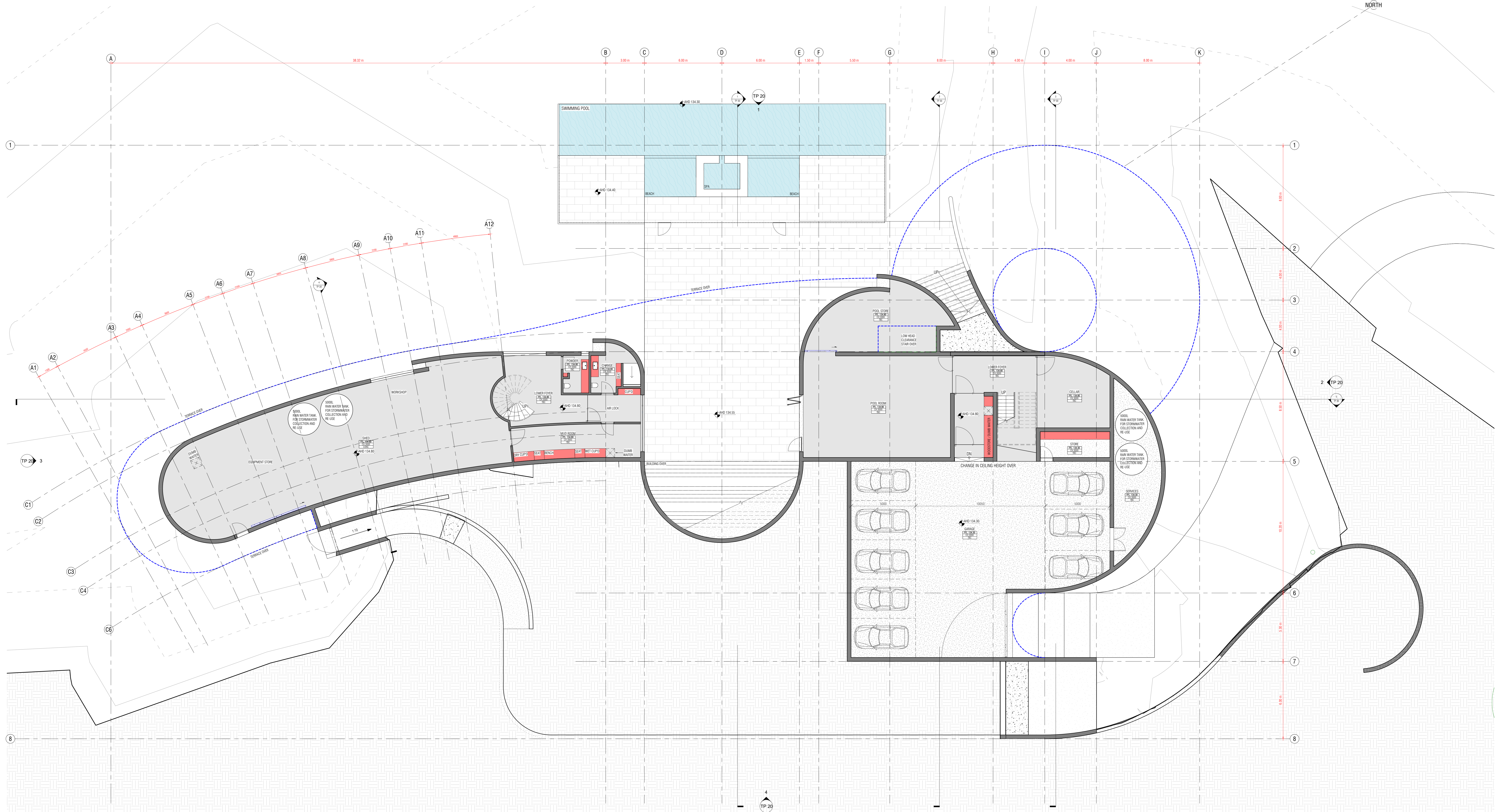
Mark	SPECIES	Comments	TPZ	SRZ	TPZ ENCROACHMENT
TREE 20	YELLOW BOX	RETAIN	2.2M	1.6M	NIL
TREE 21	MONTSEY CYPRESS	REMOVED	2.4M	1.7M	REMOVED
TREE 22	EUCALYPT	DEAD	5.8M	2.4M	REMOVED
TREE 23	MESSMATE	REMOVED	9.2M	3.0M	REMOVED
TREE 24	YELLOW BOX	RETAIN	8.2M	2.8M	NIL
TREE 25	EUCALYPT	REMOVED	7.8M	2.8M	REMOVED
TREE 26	EUCALYPT	REMOVED	1.5M	1.5M	REMOVED
TREE 27	EUCALYPT	RETAIN ENCROACH	8.6M	2.9M	10%
TREE 28	EUCALYPT	RETAIN	5.5M	2.4M	NIL
TREE 29	EUCALYPT	RETAIN ENCROACH	7.7M	2.7M	9.5%
TREE 30	EUCALYPT	RETAIN	8.8M	2.9M	NIL
TREE 31	EUCALYPT	REMOVED	6.0M	2.5M	REMOVED
TREE 32	EUCALYPT	REMOVED	5.8M	2.4M	REMOVED
TREE 33	EUCALYPT	RETAIN ENCROACH	8.8M	2.9M	8.1%
TREE 34	EUCALYPT	RETAIN ENCROACH	11.8M	3.3M	18.5%
TREE 35	EUCALYPT	RETAIN ENCROACH	8.3M	2.8M	17.5%
TREE 36	EUCALYPT	RETAIN	2.0M	1.5M	NIL
TREE 38	EUCALYPT	RETAIN	2.0M	1.5M	NIL



1 TP - SITE PLAN  
1:750

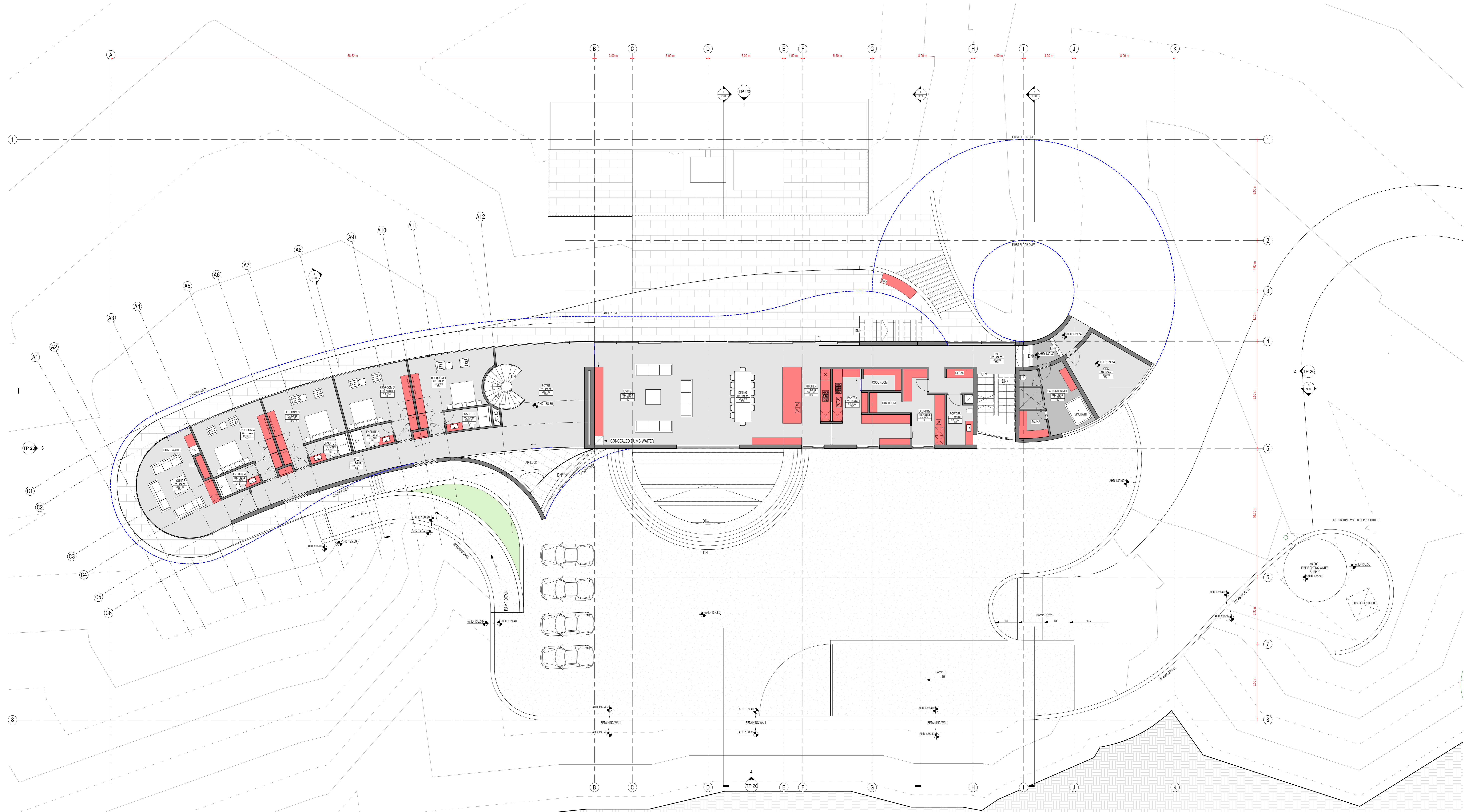
Mark	SPECIES	Comments	TPZ	SRZ	TPZ ENCROACHMENT
TREE 1	EUCALYPT	RETAIN	11.4M	3.2M	NIL
TREE 2	EUCALYPT	RETAIN	2.3M	1.6M	NIL
TREE 3	EUCALYPT	RETAIN	2.0M	1.6M	NIL
TREE 4	EUCALYPT	RETAIN	9.2M	3.0M	NIL
TREE 5	EUCALYPT	RETAIN ENCROACH	11.9M	3.3M	10%
TREE 6	EUCALYPT	DEAD	10.7M	3.2M	NIL
TREE 7	EUCALYPT	DEAD	10.4M	3.1M	DEAD TO BE REMOVED
TREE 8	YELLOW BOX	RETAIN	8.0M	2.8M	NIL
TREE 9	YELLOW BOX	RETAIN	8.0M	2.8M	NIL
TREE 10	RED STRINGYBARK	RETAIN	8.0M	2.8M	NIL
TREE 11	RED STRINGYBARK	RETAIN	3.6M	2.0M	NIL
TREE 12	RED STRINGYBARK	RETAIN	7.9M	2.8M	NIL
TREE 13	RED STRINGYBARK	RETAIN ENCROACH	9.0M	2.9M	2.4%
TREE 14	EUCALYPT	RETAIN	12.5M	3.4M	NIL
TREE 15	MESSMATE	RETAIN	2.0M	1.5M	NIL
TREE 16	RED STRINGYBARK	RETAIN	2.0M	1.5M	NIL
TREE 17	RED STRINGYBARK	RETAIN ENCROACH	6.4M	2.5M	NIL
TREE 18	EUCALYPT	DEAD	4.7M	2.2M	NIL
TREE 19	YELLOW BOX	RETAIN	11.8M	3.3M	NIL

Mark	SPECIES	Comments	TPZ	SRZ	TPZ ENCROACHMENT
TREE 20	YELLOW BOX	RETAIN	2.2M	1.6M	NIL
TREE 21	MONTEREY CYPRESS	REMOVED	2.4M	1.7M	REMOVED
TREE 22	EUCALYPT	DEAD	5.9M	2.4M	REMOVED
TREE 23	MESSMATE	REMOVED	9.2M	3.0M	REMOVED
TREE 24	YELLOW BOX	RETAIN	8.2M	2.8M	NIL
TREE 25	EUCALYPT	REMOVED	7.8M	2.8M	REMOVED
TREE 26	EUCALYPT	REMOVED	1.5M	1.5M	REMOVED
TREE 27	EUCALYPT	RETAIN ENCROACH	8.6M	2.9M	10%
TREE 28	EUCALYPT	RETAIN	5.5M	2.4M	NIL
TREE 29	EUCALYPT	RETAIN ENCROACH	7.7M	2.7M	9.5%
TREE 30	EUCALYPT	RETAIN	8.8M	2.9M	NIL
TREE 31	EUCALYPT	REMOVED	6.0M	2.5M	REMOVED
TREE 32	EUCALYPT	REMOVED	5.8M	2.4M	REMOVED
TREE 33	EUCALYPT	RETAIN ENCROACH	8.8M	2.9M	8.1%
TREE 34	EUCALYPT	RETAIN ENCROACH	11.8M	3.3M	18.5%
TREE 35	EUCALYPT	RETAIN ENCROACH	8.3M	2.8M	17.5%
TREE 36	EUCALYPT	RETAIN	2.0M	1.5M	NIL
TREE 38	EUCALYPT	RETAIN	2.0M	1.5M	NIL



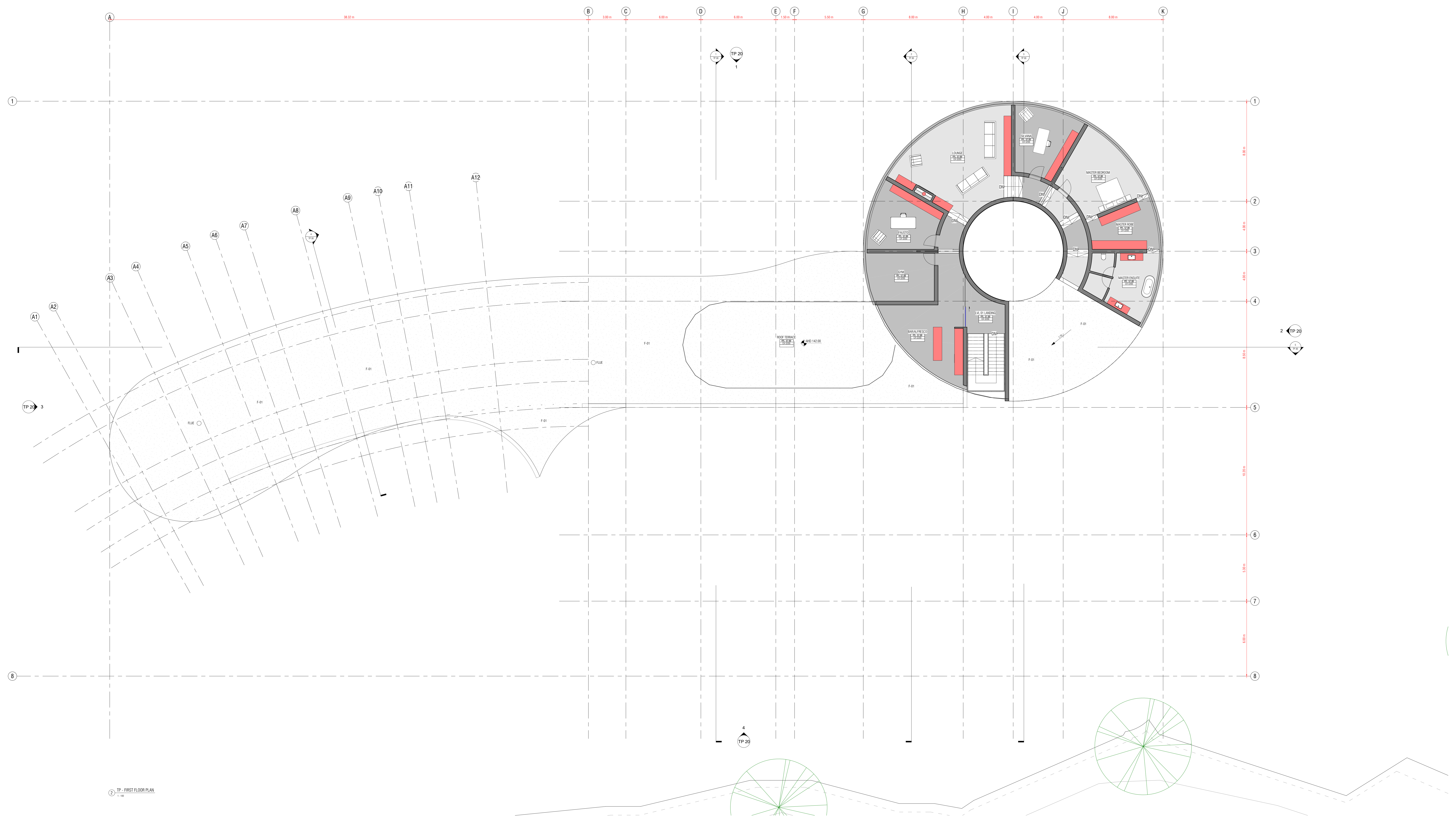
1 TP - BASEMENT FLOOR PLAN

REV.	DATE	DESCRIPTION



1 TP FFL - GROUND FLOOR PLAN  
1:100

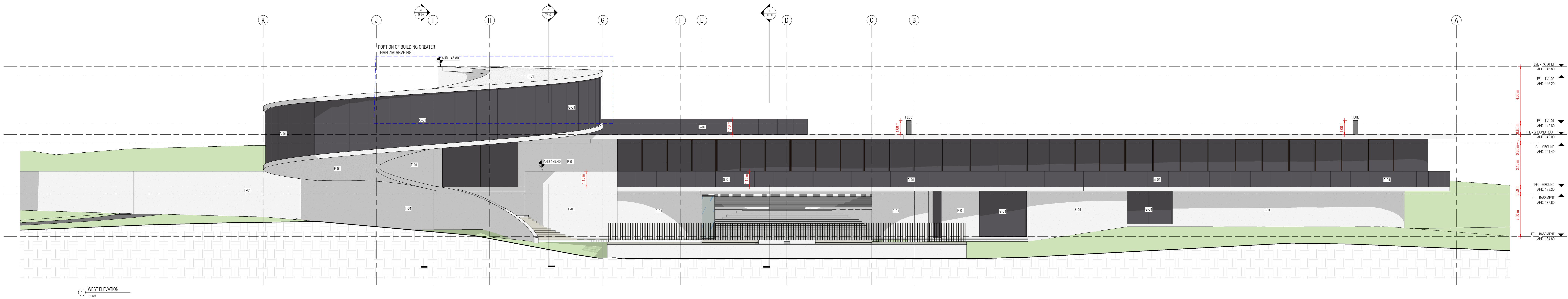
REV.	DATE	DESCRIPTION



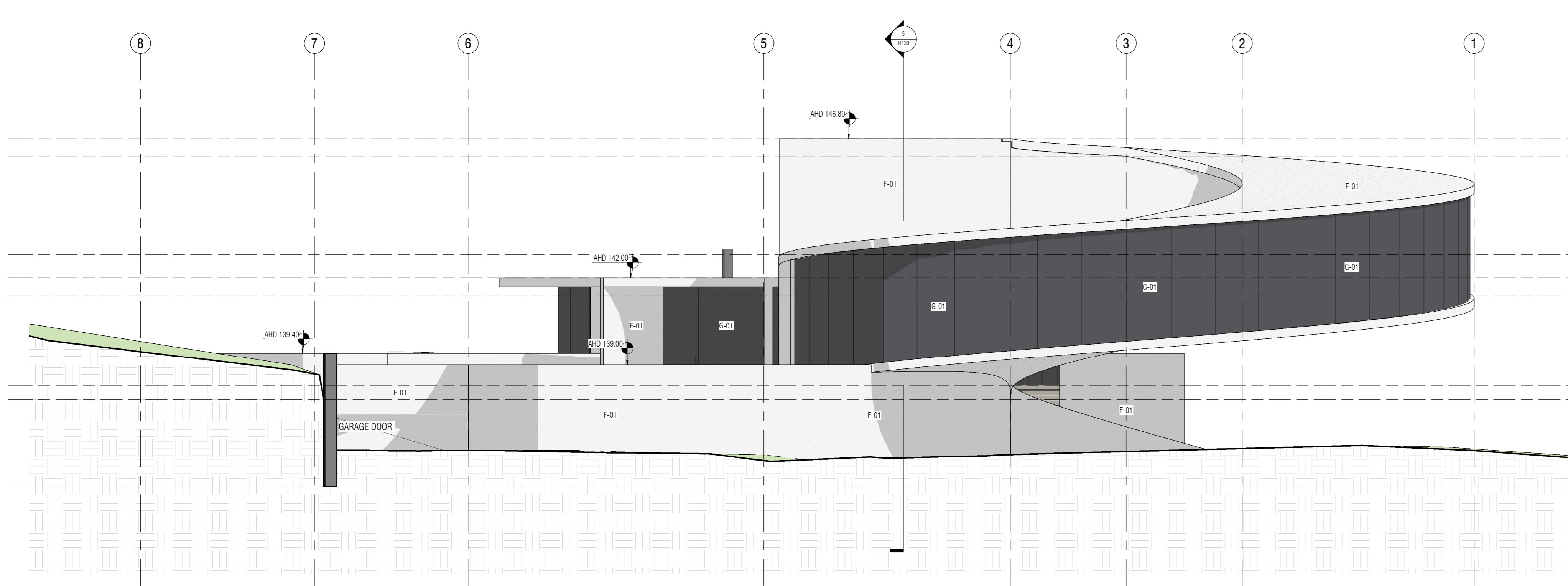
2 TP - FIRST FLOOR PLAN

REV.	DATE	DESCRIPTION

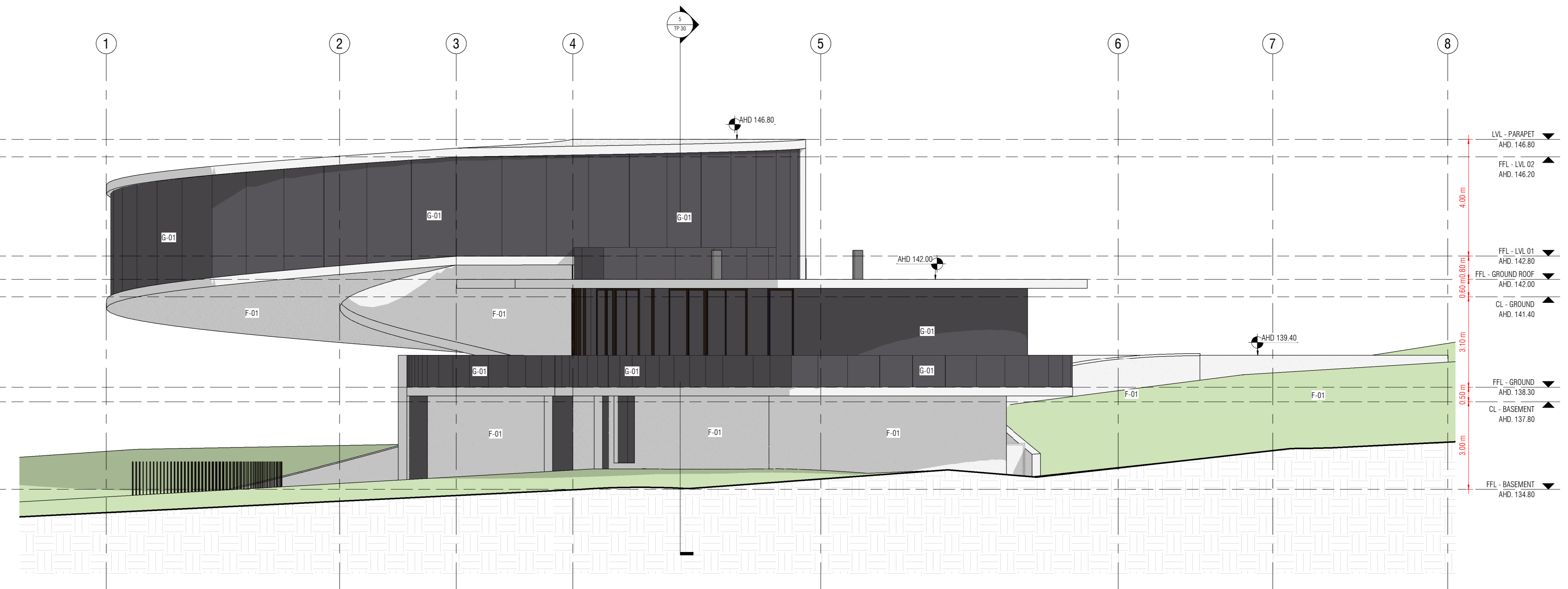




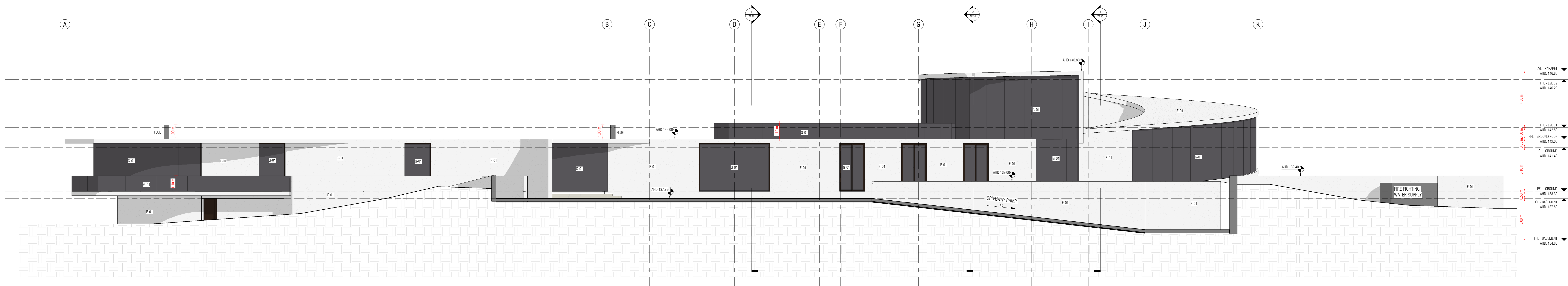
1 WEST ELEVATION  
1:100



2 NORTH ELEVATION  
1:100



3 SOUTH ELEVATION  
1:100



4 EAST ELEVATION  
1:100

MATERIALS SCHEDULE	
Material Mark	Material Comments
F-01	CONCRETE - CAST INSITU
G-01	CLEAR GLASS

REV.	DATE	DESCRIPTION

PROJECT :  
**325 Pinnacle Lane, Steels  
 Creek, VIC 3775**

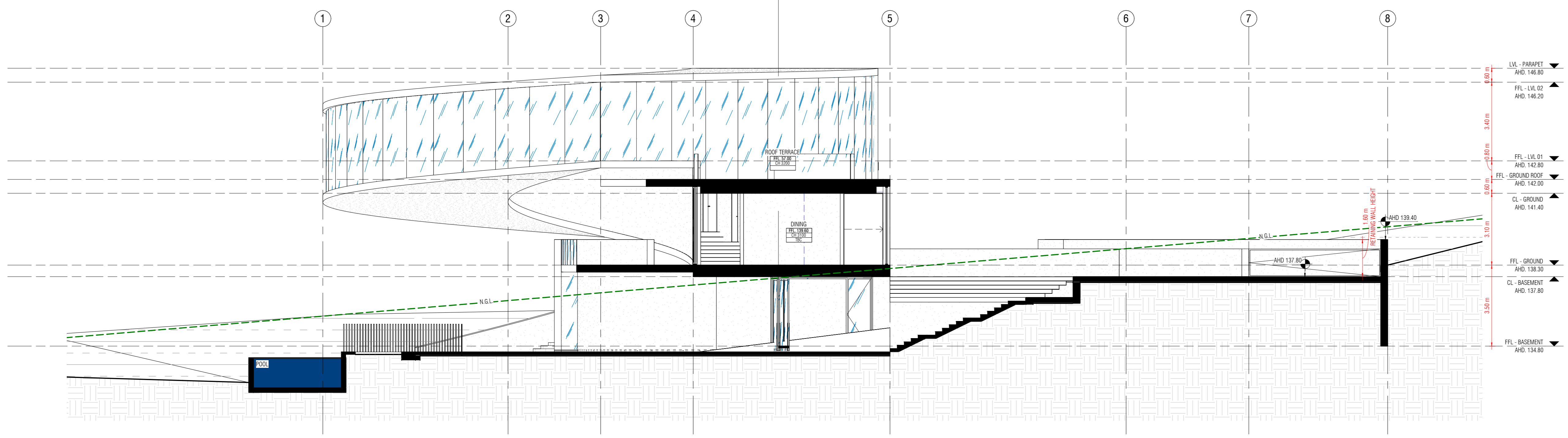
ISSUE :  
**TOWN PLANNING**

DRAWING TITLE :  
**PROPOSED ELEVATIONS**

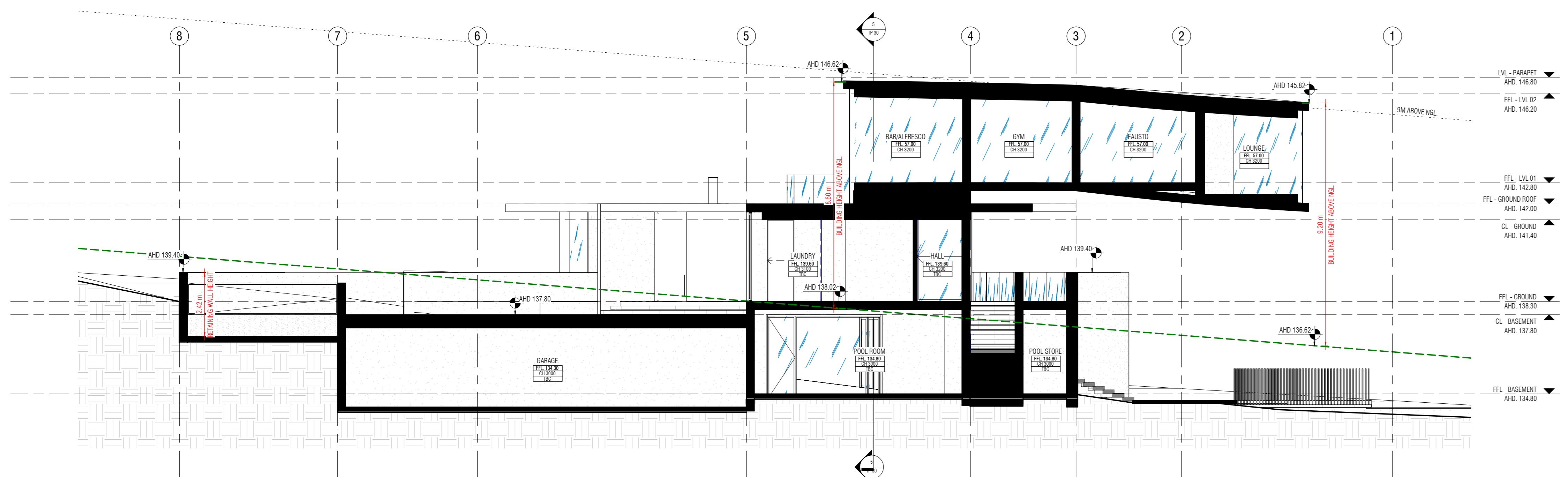
JOB NO. :  
**20549**  
 DWG NO. :  
**TP 20**

SCALE :  
**1 : 100 @ A0**  
 DRAWN :  
**DA**

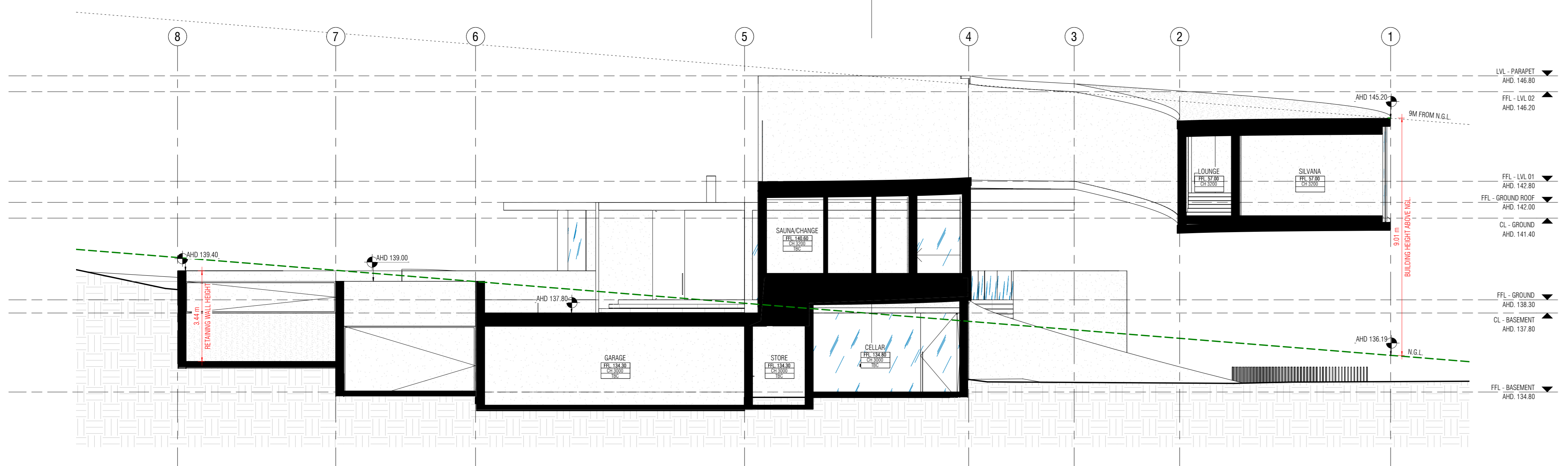
DATE :  
**15/12/2021 12:55:12 PM**  
 REVISION :



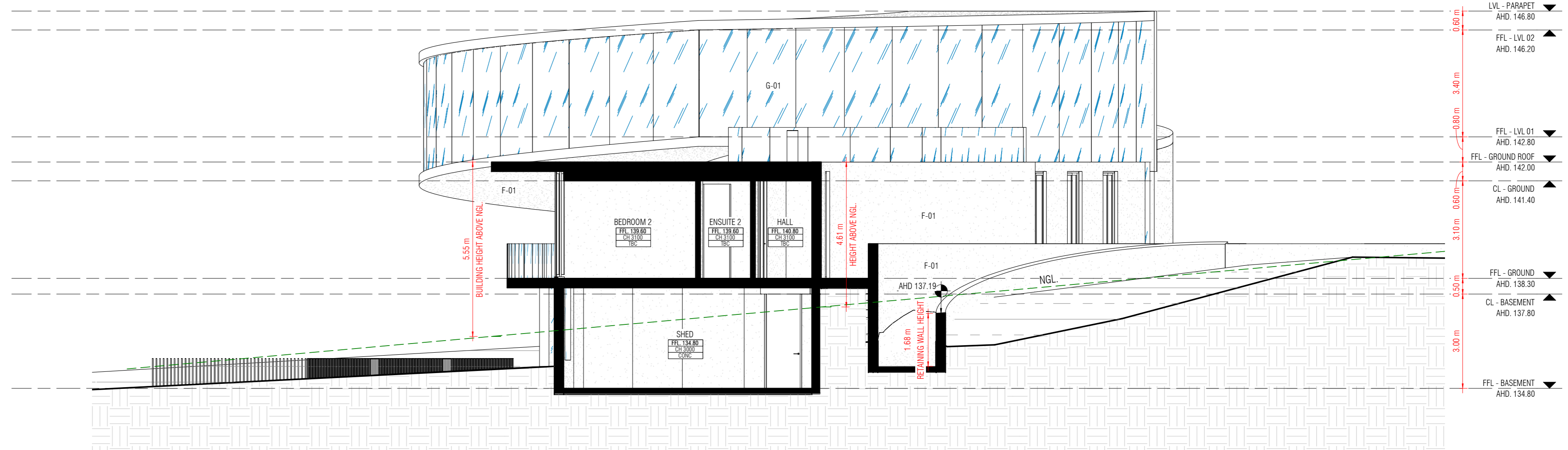
1 TP-SECTION 1  
1:100



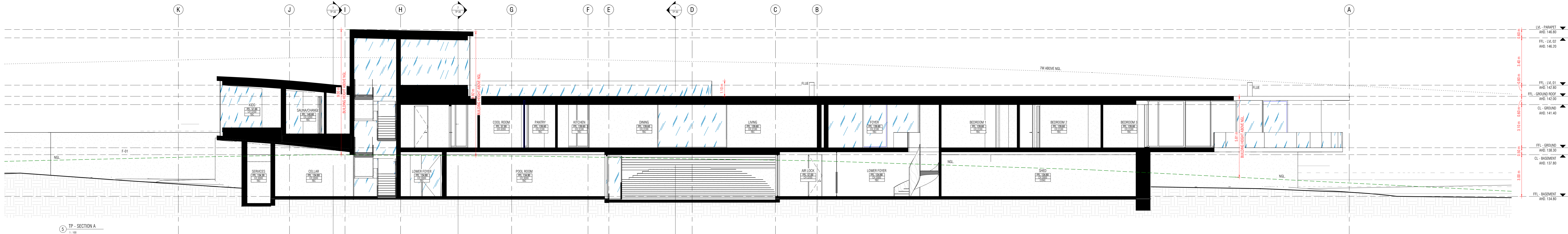
2 TP-SECTION 2  
1:100



3 TP-SECTION 3  
1:100

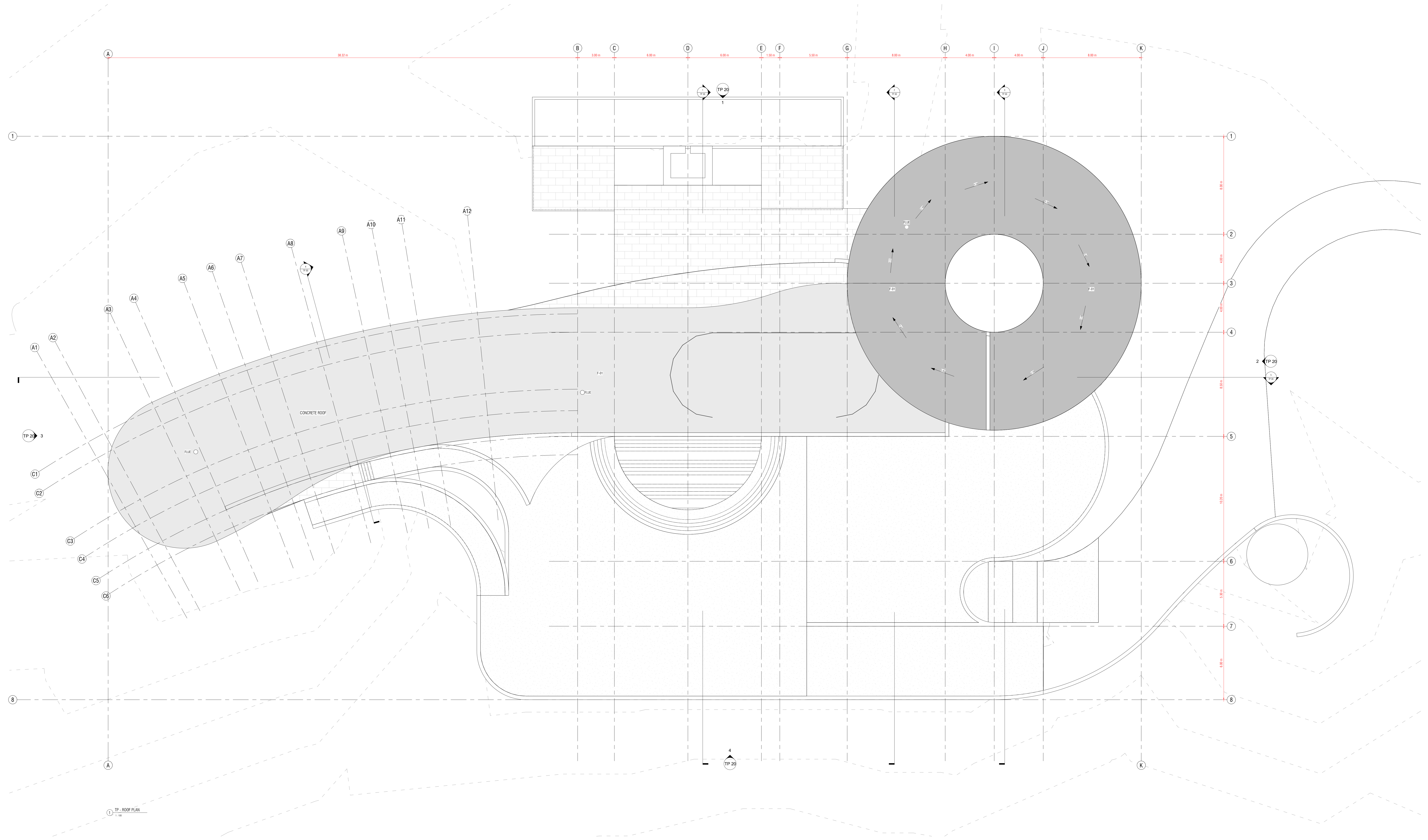


4 TP-SECTION 4  
1:100



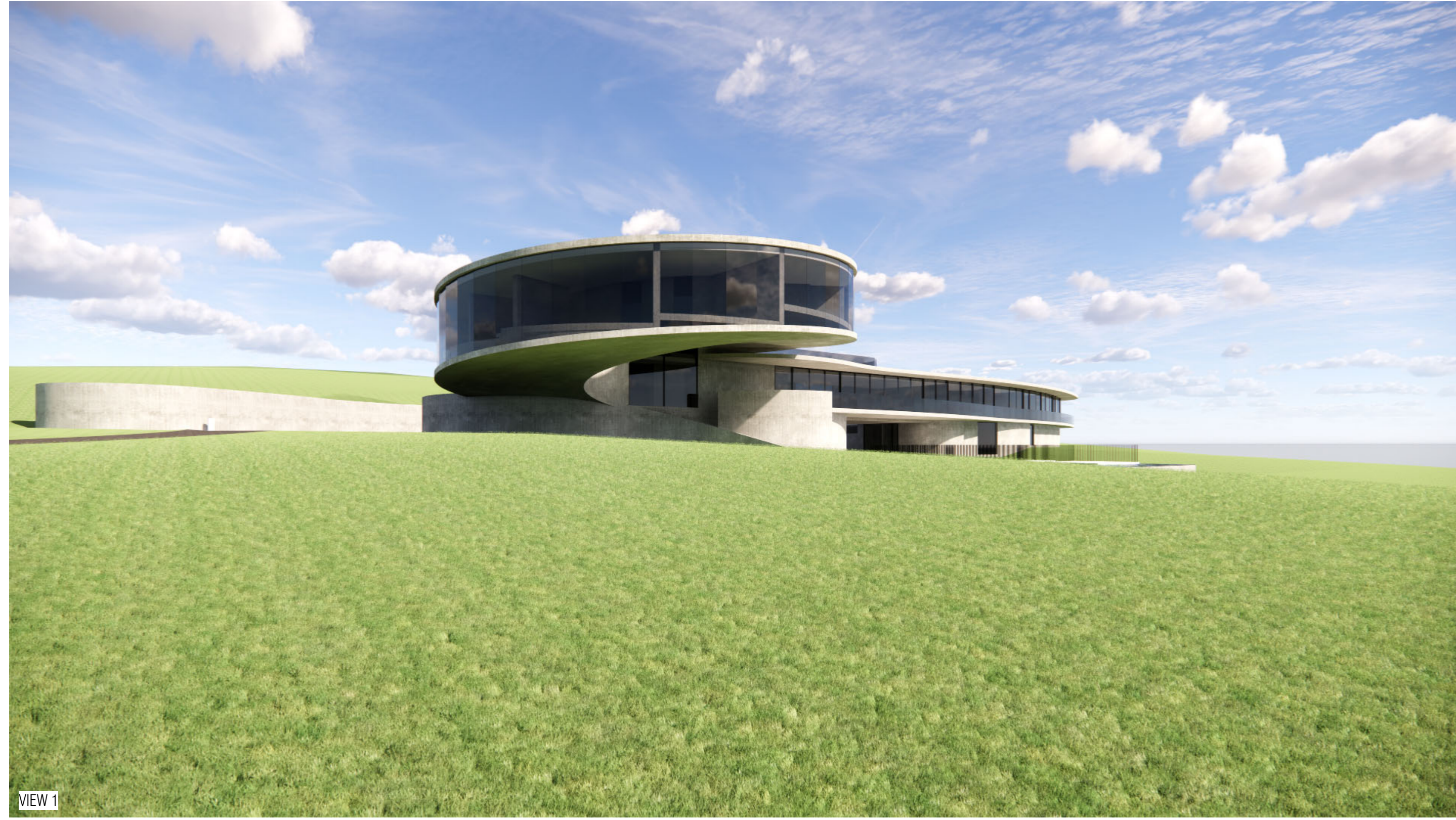
5 TP-SECTION A  
1:100

REV.	DATE	DESCRIPTION

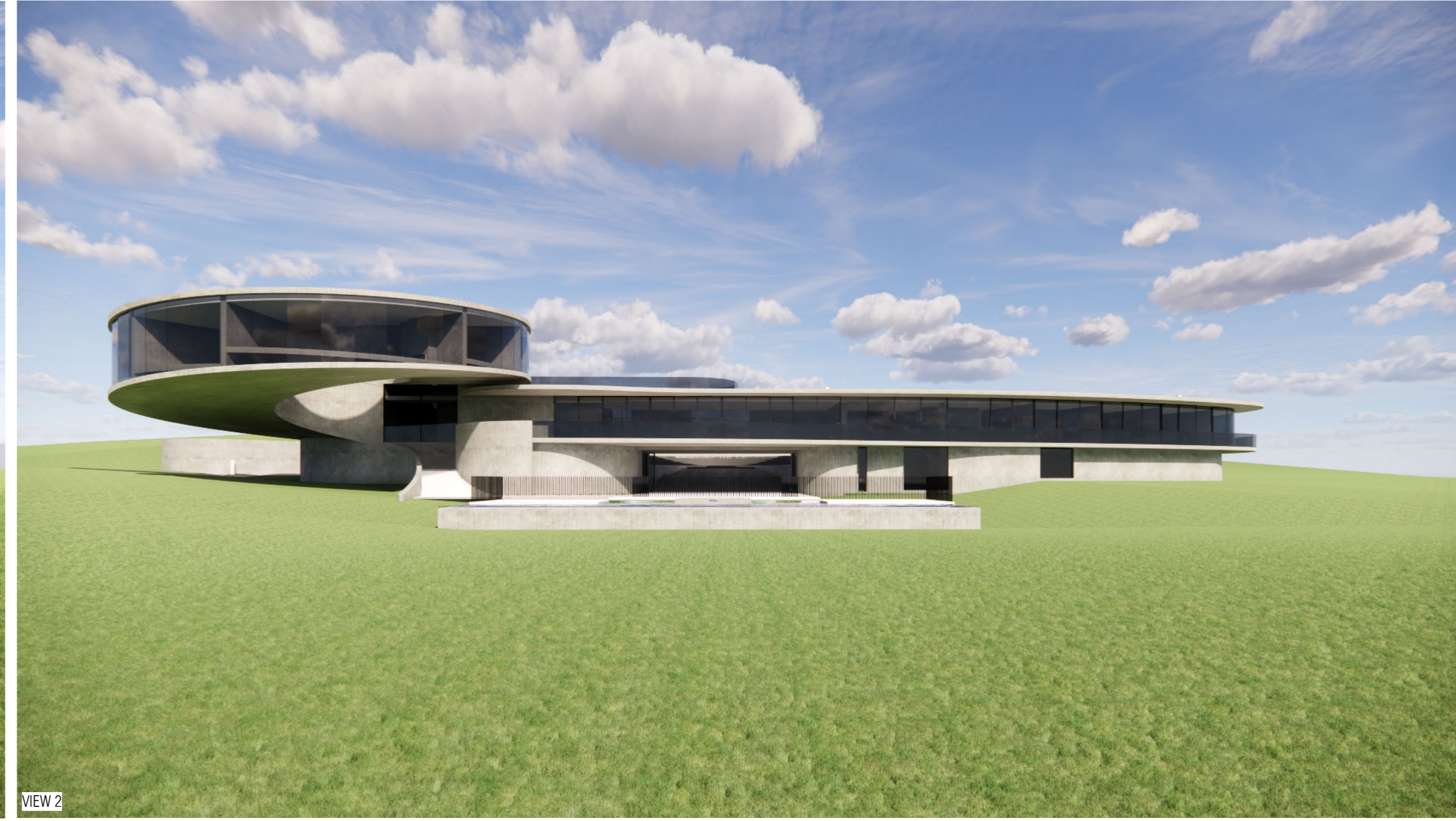


REV.	DATE	DESCRIPTION

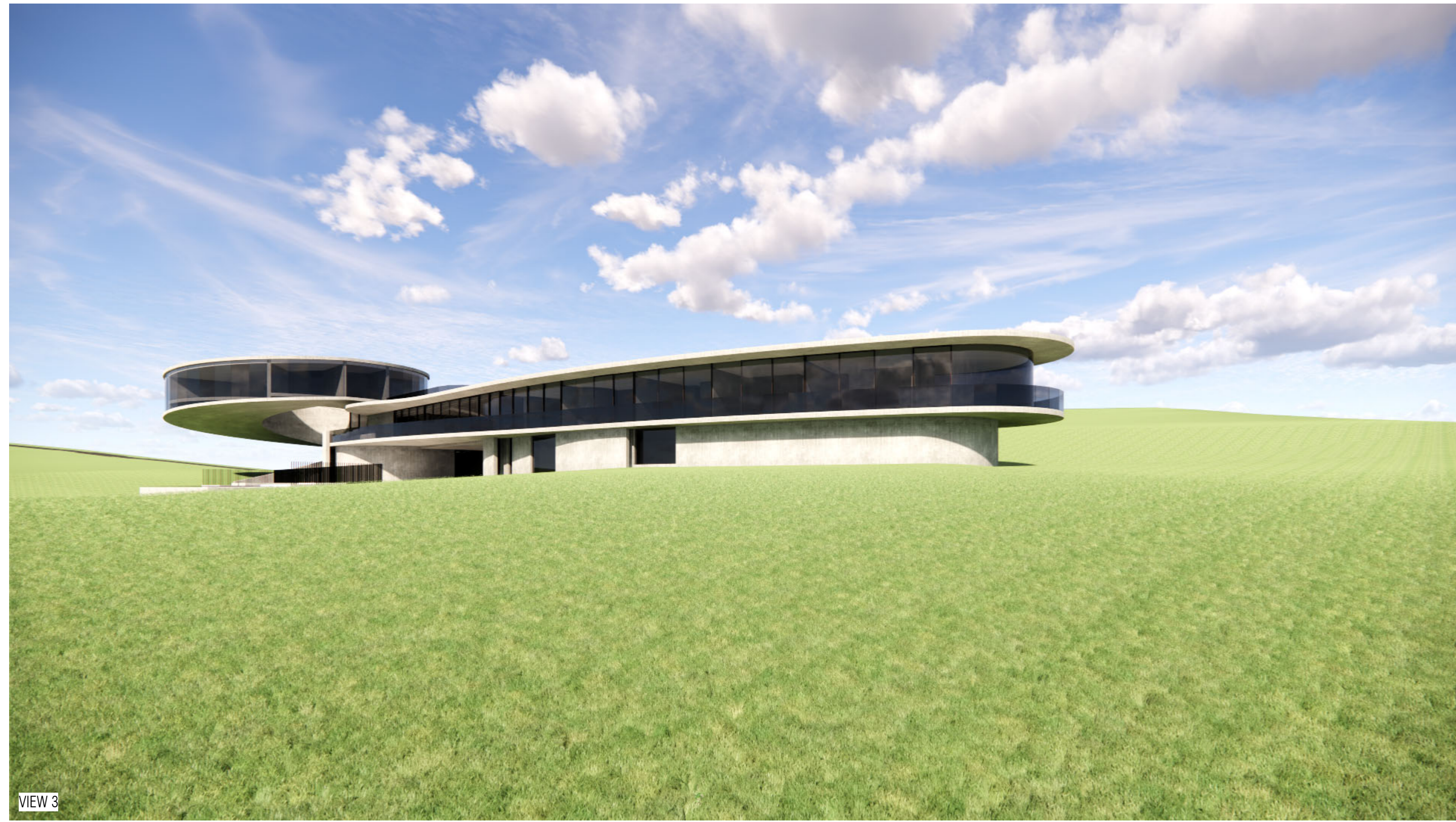
3D PERSPECTIVES  
REFER TO PROPOSED SITE PLAN TP10 FOR CAMERA LOCATIONS



VIEW 1



VIEW 2

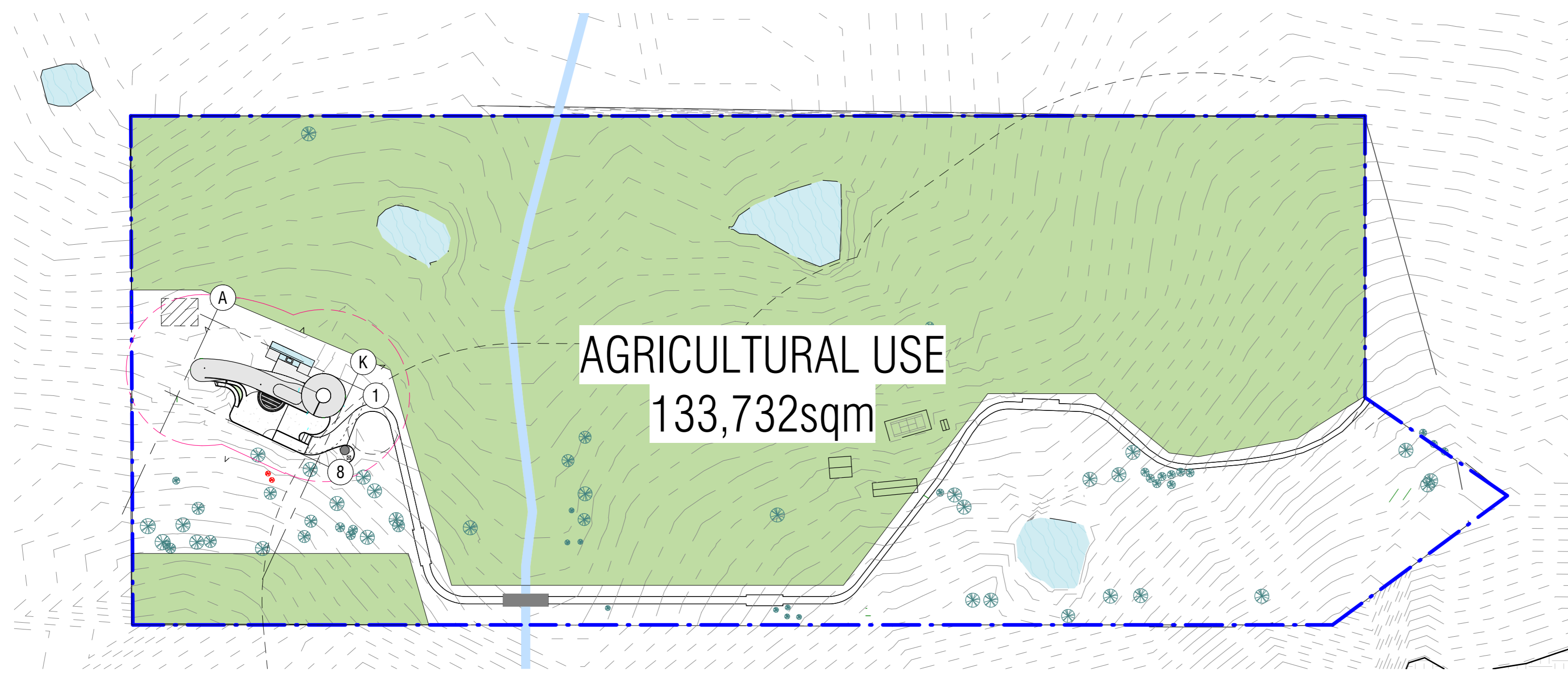


VIEW 3

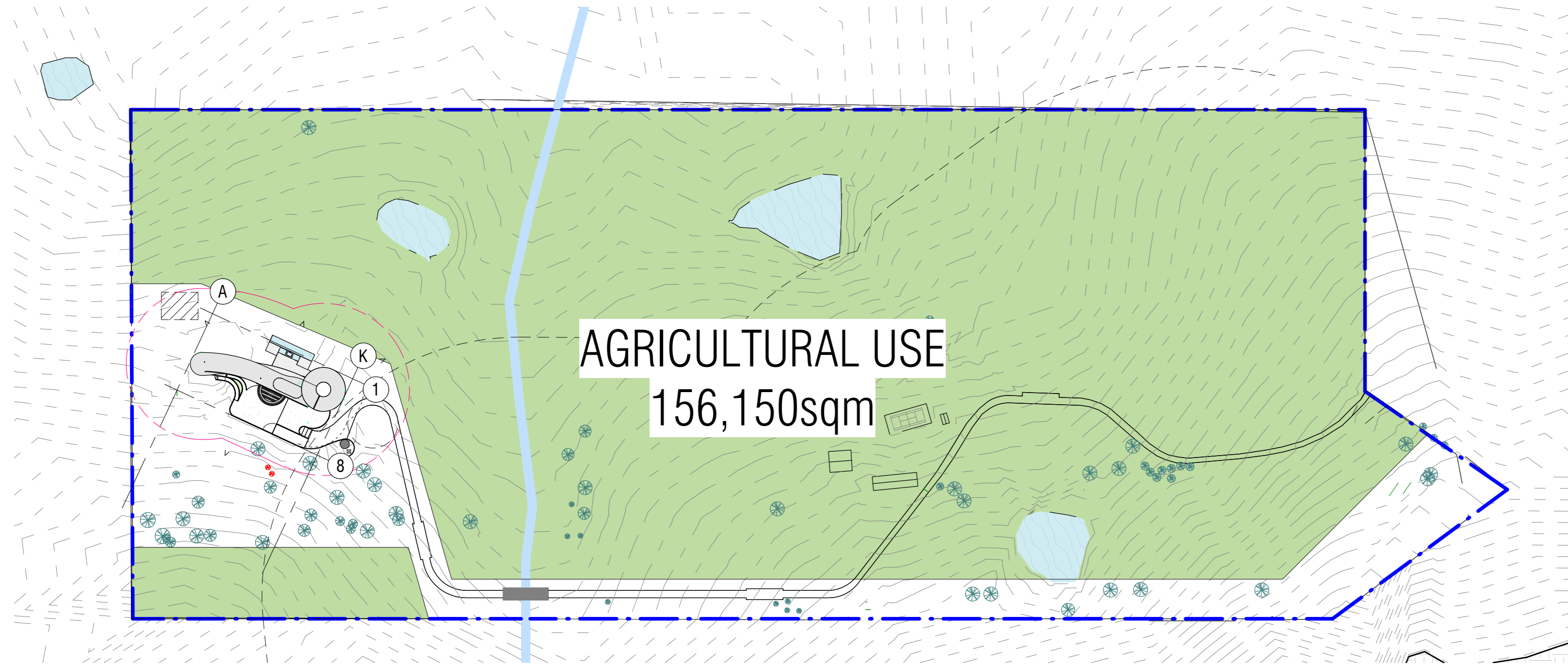


VIEW 4

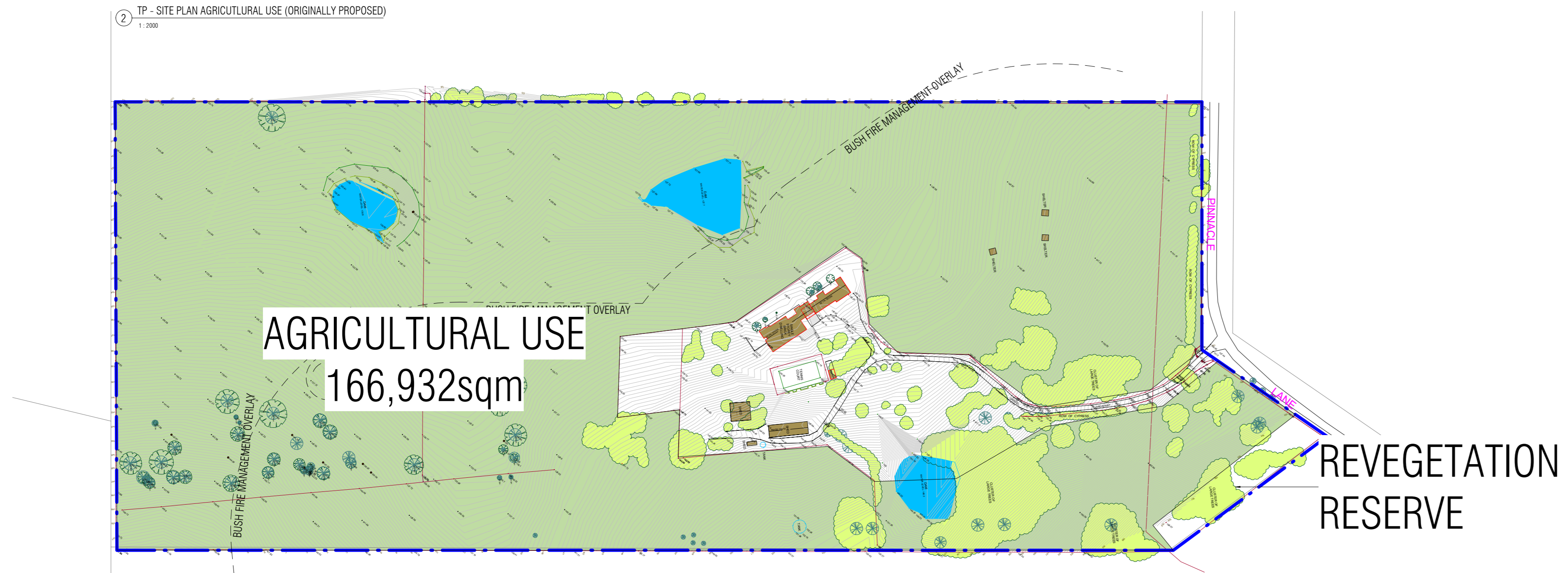
REV.	DATE	DESCRIPTION



① TP - SITE PLAN AGRICULTURAL USE (AS AMENDED)



② TP - SITE PLAN AGRICULTURAL USE (ORIGINALLY PROPOSED)



③ TP - SITE PLAN AGRICULTURAL USE (EXISTING)